

ChatGPT Quick Start Guide



Introduction to ChatGPT

Brief explanation of what ChatGPT is

Purpose of the guide

Target audience

Getting Started with ChatGPT

How to access ChatGPT

Basic navigation of the interface

How to initiate a conversation with ChatGPT

Using ChatGPT

Guidelines for effective communication with ChatGPT

Understanding ChatGPT's responses

How to ask questions or provide prompts to ChatGPT

Tips for improving the accuracy of ChatGPT's responses

Advanced Features of ChatGPT

Exploring ChatGPT's capabilities beyond basic conversation

Examples of tasks that ChatGPT can help with (e.g. summarizing text, generating creative writing)

How to utilize these features effectively

Troubleshooting ChatGPT

Common issues users may encounter when using ChatGPT

Solutions to these issues

How to contact support if further assistance is needed

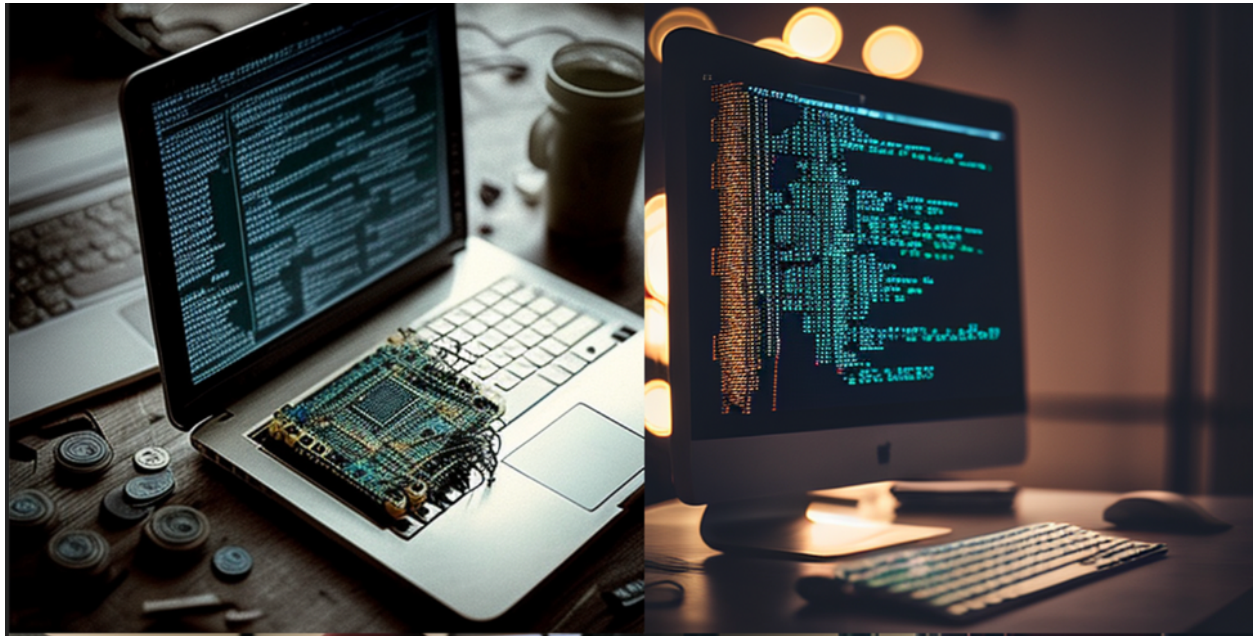
Conclusion

Summary of key points covered in the guide

Final thoughts and recommendations for using ChatGPT effectively.

Introduction to ChatGPT	2
Brief explanation of what ChatGPT is	4
Purpose of the guide	4
Target audience	5
Getting Started with ChatGPT	6
How to access ChatGPT	7
Basic navigation of the interface	8
How to initiate a conversation with ChatGPT	9
Using ChatGPT	10
Guidelines for effective communication with ChatGPT	12
Understanding ChatGPT's responses	13
How to ask questions or provide prompts to ChatGPT	15
Tips for improving the accuracy of ChatGPT's responses	16
Advanced Features of ChatGPT	18
Exploring ChatGPT's capabilities beyond basic conversation	19
Examples of tasks that ChatGPT can help with (e.g. summarizing text, generating creative writing)	21
How to utilize these features effectively	23

Troubleshooting ChatGPT	24
Common issues users may encounter when using ChatGPT	25
Solutions to these issues	28
How to contact support if further assistance is needed	30
Conclusion	31
Summary of key points covered in the guide	32
Final thoughts and recommendations for using ChatGPT effectively.	34



Introduction to ChatGPT

This section of the guide provides an overview of ChatGPT, an artificial intelligence language model developed by OpenAI that can answer questions and generate text based on user input.

ChatGPT is a powerful tool that allows you to communicate with an advanced artificial intelligence language model. Developed by OpenAI, ChatGPT is based on the GPT-3.5 architecture, which enables it to process and generate human-like language in response to user prompts.

The purpose of this guide is to help you learn how to use ChatGPT effectively. Whether you're looking to have a casual conversation, ask a question, or explore the capabilities of the model, this guide will provide you with the information you need to get started.

This guide is intended for anyone who wants to learn how to use ChatGPT. You don't need any prior technical knowledge or experience with AI language models to use ChatGPT. All you need is an internet connection and a willingness to experiment and explore.

In the following sections, we'll provide you with an overview of how to use ChatGPT, including how to get started, basic navigation of the interface, guidelines for effective communication, tips for improving the accuracy of ChatGPT's responses, and how to utilize advanced features. Additionally, we'll cover some common troubleshooting issues and provide solutions to help you get the most out of ChatGPT.

By the end of this guide, you'll have a good understanding of how to use ChatGPT effectively, and you'll be able to communicate with the language model in a way that maximizes its potential. Let's get started!

Brief explanation of what ChatGPT is

ChatGPT is an artificial intelligence language model developed by OpenAI that can communicate with users using natural language processing. It is based on the GPT-3.5 architecture, which enables it to generate human-like responses to user prompts and questions. Users can ask ChatGPT a wide range of questions and provide prompts on various topics, and the model will generate responses that are designed to be as accurate and natural-sounding as possible. Overall, ChatGPT is a powerful tool for communicating with an AI language model and exploring the capabilities of advanced natural language processing technology.

Purpose of the guide

The purpose of This section of the guide is to provide users with a comprehensive overview of ChatGPT and how to use it effectively.

The purpose of this guide is to provide users with a comprehensive overview of how to use ChatGPT effectively. ChatGPT is a powerful tool, but it can be difficult to use if you're not familiar with AI language models or natural language

processing. This guide is designed to help users navigate the interface, communicate effectively with the model, and get the most out of the ChatGPT experience.

Whether you're using ChatGPT for research, entertainment, or personal curiosity, this guide will provide you with the knowledge and skills you need to use the model effectively. We'll cover everything from basic navigation of the interface to advanced features like text summarization and creative writing.

By the end of this guide, you'll be able to communicate with ChatGPT in a way that maximizes its potential. You'll have a clear understanding of how to ask questions, provide prompts, and explore the full range of capabilities of this powerful language model. Whether you're a seasoned AI researcher or a casual user, this guide will help you get the most out of your ChatGPT experience.

Target audience

The target audience for this guide includes anyone who wants to use ChatGPT, regardless of their technical expertise.

This guide is intended for anyone who wants to learn how to use ChatGPT effectively. Whether you're a researcher, student, professional, or simply curious about AI language models, this

guide will provide you with the information you need to get started.

You don't need any prior technical knowledge or experience with AI language models to use ChatGPT. The model is designed to be user-friendly, and its interface is intuitive and easy to navigate. However, if you have experience with natural language processing or AI research, you may find some of the advanced features of ChatGPT particularly interesting.

Overall, this guide is intended for anyone who wants to communicate with an AI language model in a way that maximizes its potential. Whether you're looking to have a casual conversation, ask a question, or explore the capabilities of the model, this guide will provide you with the information you need to get started. So if you're ready to explore the world of ChatGPT, let's dive in!

Getting Started with ChatGPT

This section of the guide provides information on how to access ChatGPT, including through the OpenAI website and third-party applications.

Using ChatGPT is easy! All you need is an internet connection and a device (such as a computer or smartphone) with a web browser. Here's how to get started:

1. Open your web browser and navigate to the ChatGPT website. The URL is typically "https://chat.openai.com".
2. Once you're on the ChatGPT website, you'll see a text box where you can type your message. This is where you'll communicate with the AI language model.
3. To initiate a conversation, simply type your message in the text box and hit "Enter" on your keyboard. ChatGPT will then generate a response based on your input.

That's it! You're now communicating with ChatGPT. As you continue to use the model, you'll become more familiar with its capabilities and how to communicate with it effectively. In the next section, we'll cover some basic navigation of the interface to help you get started.

How to access ChatGPT

ChatGPT is a web-based application that can be accessed through any web browser on any device that has an internet connection.

To access ChatGPT, simply follow these steps:

1. Open your web browser (such as Google Chrome, Mozilla Firefox, or Safari) on your computer or smartphone.

2. In the address bar, type "https://chat.openai.com/" and hit "Enter" on your keyboard. This will take you to the ChatGPT website.
3. Once you're on the ChatGPT website, you'll see a text box where you can type your message. This is where you'll communicate with the AI language model.

That's it! You're now ready to start using ChatGPT. If you're new to the application, we recommend reading through the rest of this guide to learn more about how to use ChatGPT effectively.

Basic navigation of the interface

Users are introduced to the basic navigation of the interface, including how to initiate a conversation with ChatGPT.

The ChatGPT interface is designed to be user-friendly and easy to navigate. Here are the basic components of the interface and how to use them:

1. **Text box:** This is where you can type your message or prompt for ChatGPT. Simply click on the text box and start typing.
2. **Response box:** This is where ChatGPT's response will appear after you type your message or prompt. The response box will appear below the text box.

3. **Settings:** Click on the gear icon in the upper right corner of the screen to access ChatGPT's settings. Here, you can adjust the language model's parameters, change the theme of the interface, and customize your user preferences.
4. **Menu:** Click on the three horizontal lines in the upper left corner of the screen to access the menu. From here, you can access additional features of ChatGPT, such as text summarization, creative writing prompts, and more.
5. **Help:** If you need assistance while using ChatGPT, click on the question mark icon in the upper right corner of the screen. This will take you to a page where you can access the FAQ, contact support, or report a bug.

That's it! By familiarizing yourself with these basic components of the interface, you'll be able to use ChatGPT more effectively and efficiently.

How to initiate a conversation with ChatGPT

This section of the guide provides information on how to initiate a conversation with ChatGPT, including how to type in questions or prompts in the chat window.

Initiating a conversation with ChatGPT is easy! Here are the steps:

1. Type your message or prompt in the text box. For example, you might type "What is the weather like today?" or "Can you recommend a good book to read?"
2. Hit "Enter" on your keyboard. ChatGPT will generate a response based on your input.
3. Read the response in the response box. If you're satisfied with the response, you can continue the conversation by typing another message in the text box and hitting "Enter" on your keyboard.

That's it! You're now communicating with ChatGPT. As you continue to use the model, you'll become more familiar with its capabilities and how to communicate with it effectively. In the next section, we'll cover some tips for getting the most out of your conversations with ChatGPT.

Using ChatGPT

Users are introduced to the guidelines for effective communication with ChatGPT, including how to improve the accuracy of ChatGPT's responses.

ChatGPT is a powerful AI language model that can generate human-like responses to a wide variety of prompts and questions. Here are some tips for using ChatGPT effectively:

1. **Be specific:** The more specific your prompt or question, the more accurate and helpful ChatGPT's response will be. For example, instead of asking "What is the weather like?", try asking "What is the weather like in San Francisco today?"
2. **Ask follow-up questions:** ChatGPT can provide detailed and informative responses, so don't be afraid to ask follow-up questions if you need more information or clarification.
3. **Use proper grammar and punctuation:** ChatGPT can understand and respond to a wide range of grammar and punctuation, but using proper grammar and punctuation will help ensure that your messages are clear and easy to understand.
4. **Try different prompts and questions:** ChatGPT can generate responses to a wide range of prompts and questions, so don't be afraid to try different topics and see what kind of responses you get.
5. **Use ChatGPT as a writing tool:** In addition to generating responses to prompts and questions, ChatGPT can also be used as a writing tool. Try using it to generate creative writing prompts, brainstorm ideas for essays or articles, or even generate entire paragraphs of text.

By following these tips, you'll be able to use ChatGPT to its fullest potential and get the most out of your conversations with the AI language model.

Guidelines for effective communication with ChatGPT

This section of the guide provides guidelines for effective communication with ChatGPT, including providing clear and specific prompts and avoiding repetitive prompts.

Communicating effectively with ChatGPT requires some skill and practice. Here are some guidelines to help you get the most out of your conversations:

1. **Be clear and concise:** ChatGPT responds best to clear and concise prompts and questions. Avoid using overly complicated language or convoluted sentences, as this can confuse the language model.
2. **Stay on topic:** ChatGPT is best used for specific prompts and questions. If you stray too far from the original topic, the language model may become confused and provide less helpful responses.
3. **Avoid using jargon or slang:** ChatGPT is designed to understand and respond to a wide range of language, but using jargon or slang can make it more difficult for the model to provide accurate and helpful responses.

4. **Be patient:** ChatGPT may take a few moments to generate a response, especially if you've asked a complex question or provided a lot of information. Be patient and wait for the response to appear in the response box.
5. **Use context clues:** ChatGPT can generate responses based on context clues from your prompt or question. For example, if you ask "What is the weather like in Paris?", ChatGPT can use the context of "Paris" to generate a response about the weather in that location.

By following these guidelines, you'll be able to communicate with ChatGPT more effectively and get more accurate and helpful responses to your prompts and questions.

Understanding ChatGPT's responses

Users are introduced to how to understand ChatGPT's responses, including how to interpret the responses and provide follow-up prompts.

ChatGPT's responses are generated based on its training data, which includes a wide range of texts from the internet. As a result, the language model's responses can sometimes be unexpected or even nonsensical. Here are some tips for understanding ChatGPT's responses:

1. **Consider the context:** ChatGPT's responses are generated based on the context of your prompt or question. If you provide more context, such as location or time, ChatGPT can provide more accurate and helpful responses.
2. **Look for keywords:** ChatGPT's responses often include keywords from your prompt or question. If you're having trouble understanding the response, try looking for these keywords and using them to infer the meaning of the response.
3. **Ask follow-up questions:** If ChatGPT's response is unclear or doesn't answer your question, don't be afraid to ask a follow-up question for clarification.
4. **Use common sense:** ChatGPT is a powerful language model, but it's not perfect. Use your own judgment and common sense when interpreting its responses.
5. **Provide feedback:** If you find that ChatGPT's responses are consistently inaccurate or unhelpful, provide feedback to the developers. This can help improve the language model's performance over time.

By keeping these tips in mind, you'll be able to better understand ChatGPT's responses and communicate more effectively with the language model.

How to ask questions or provide prompts to ChatGPT

This section of the guide provides information on how to ask questions or provide prompts to ChatGPT, including how to phrase the prompts to get the most accurate and relevant responses.

Asking questions or providing prompts to ChatGPT is easy. Simply type your question or prompt into the input box and hit enter. Here are some tips for asking effective questions and providing helpful prompts:

1. **Be specific:** The more specific your question or prompt, the more accurate and helpful ChatGPT's response will be. Avoid vague or open-ended questions, as these can lead to less helpful responses.
2. **Use proper grammar and spelling:** ChatGPT works best with properly formatted questions and prompts. Use proper grammar, spelling, and punctuation to help the language model understand your input.
3. **Provide context:** The more context you provide with your question or prompt, the better ChatGPT will be able to generate an accurate and helpful response. Consider including location, time, or other relevant information to provide more context.

4. **Be polite and respectful:** ChatGPT is a language model, but it's important to treat it with respect and politeness. Avoid using offensive or inappropriate language, as this can negatively impact the quality of ChatGPT's responses.
5. **Use natural language:** ChatGPT is designed to understand and respond to natural language. Use conversational language and avoid overly formal or technical language, unless it's necessary for your question or prompt.

By following these tips, you'll be able to ask effective questions and provide helpful prompts to ChatGPT, and get more accurate and helpful responses in return.

Tips for improving the accuracy of ChatGPT's responses

This section of the guide provides tips for improving the accuracy of ChatGPT's responses, including being patient and providing clear and specific prompts.

While ChatGPT is a powerful language model, it's not perfect. Here are some tips for improving the accuracy of its responses:

1. **Provide more context:** ChatGPT's responses are generated based on the context of your question or prompt. The more context you provide, the more accurate and helpful its responses will be.

2. **Use feedback:** If you find that ChatGPT's responses are consistently inaccurate or unhelpful, use the feedback feature to let the developers know. This can help improve the language model's performance over time.
3. **Correct mistakes:** If ChatGPT provides an inaccurate response, you can correct it by providing feedback. This will help the language model learn from its mistakes and generate more accurate responses in the future.
4. **Use multiple prompts:** If you're not getting helpful responses to a particular prompt, try rephrasing your question or providing a different prompt. ChatGPT may have more success generating accurate responses with a different input.
5. **Avoid jargon and slang:** ChatGPT may not be familiar with specific jargon or slang terms, which can lead to inaccurate responses. Use more commonly understood language to improve the accuracy of its responses.

By following these tips, you'll be able to improve the accuracy of ChatGPT's responses and get more helpful and informative answers to your questions and prompts.

Advanced Features of ChatGPT

Users are introduced to ChatGPT's advanced features, including summarizing text, generating creative writing, and performing various other tasks.

ChatGPT offers several advanced features that can enhance your experience and make it even more powerful. Here are some of the key features to explore:

1. **Custom prompts:** With custom prompts, you can provide your own text as a starting point for ChatGPT's responses. This can be useful if you have specific information or context that you want ChatGPT to work from.
2. **Completion sampling:** Completion sampling allows you to generate multiple responses to a single prompt. This can be useful if you want to explore different potential outcomes or get a range of perspectives on a particular topic.
3. **Fine-tuning:** With fine-tuning, you can train ChatGPT on specific data or inputs, which can improve its performance on specific tasks or domains.
4. **Task-specific models:** ChatGPT offers several task-specific models, such as text summarization or translation. These models are optimized for specific tasks and can generate more accurate and useful responses in those domains.

5. **API integration:** ChatGPT can be integrated with other applications or services using its API. This allows you to incorporate the language model into your own workflows or tools.

By exploring these advanced features, you can unlock even more potential from ChatGPT and get even more accurate and helpful responses to your questions and prompts.

Exploring ChatGPT's capabilities beyond basic conversation

This section of the guide provides examples of tasks that ChatGPT can help with, including summarizing text and generating creative writing.

While ChatGPT is primarily designed for conversational interactions, it also has a wide range of capabilities beyond basic conversation. Here are some of the key areas where ChatGPT can be used:

1. **Content creation:** ChatGPT can be used to generate written content, such as articles or marketing copy. By providing a prompt and some context, ChatGPT can generate high-quality, human-like content in a matter of seconds.

2. **Research and analysis:** ChatGPT can be used to analyze large volumes of text data, such as social media posts or customer feedback. By training ChatGPT on specific inputs, you can generate insights and recommendations based on this data.
3. **Chatbot development:** ChatGPT can be used as the foundation for building chatbots and virtual assistants. By fine-tuning ChatGPT on specific domains or tasks, you can create a highly effective chatbot that can handle a wide range of customer inquiries and support requests.
4. **Creative writing:** ChatGPT can be used as a tool for generating creative writing, such as poetry or fiction. By providing a prompt and some context, ChatGPT can generate unique and creative responses that can inspire your own writing.
5. **Personalization:** ChatGPT can be used to personalize content or experiences for individual users. By training ChatGPT on individual user data, such as browsing history or purchase behavior, you can generate highly personalized recommendations or content.

By exploring these capabilities, you can unlock the full potential of ChatGPT and leverage its advanced language capabilities to enhance your workflows and improve your outcomes.

Examples of tasks that ChatGPT can help with (e.g. summarizing text, generating creative writing)

ChatGPT is a powerful language model that can help with a wide range of tasks, beyond just basic conversation. Here are some examples of tasks that ChatGPT can assist with:

1. **Summarizing text:** ChatGPT can be used to generate summaries of long documents or articles. By providing the text as a prompt, ChatGPT can generate a concise and accurate summary that captures the key points of the original content.
2. **Translation:** ChatGPT can be used to translate text from one language to another. By fine-tuning ChatGPT on a specific language pair, you can generate high-quality translations that accurately capture the meaning of the original text.
3. **Content generation:** ChatGPT can be used to generate written content, such as articles or marketing copy. By providing a prompt and some context, ChatGPT can generate high-quality, human-like content in a matter of seconds.
4. **Creative writing:** ChatGPT can be used as a tool for generating creative writing, such as poetry or fiction. By providing a prompt and some context, ChatGPT can

generate unique and creative responses that can inspire your own writing.

5. **Question answering:** ChatGPT can be used to answer specific questions or provide information on a particular topic. By providing a prompt that includes the question or topic of interest, ChatGPT can generate a response that provides relevant and accurate information.
6. **Sentiment analysis:** ChatGPT can be used to analyze the sentiment of a particular text, such as social media posts or customer feedback. By training ChatGPT on specific inputs, you can generate insights and recommendations based on this data.
7. **Personalization:** ChatGPT can be used to personalize content or experiences for individual users. By training ChatGPT on individual user data, such as browsing history or purchase behavior, you can generate highly personalized recommendations or content.

By leveraging ChatGPT's advanced language capabilities, you can improve your workflows, generate high-quality content, and gain insights and recommendations that can improve your outcomes.

How to utilize these features effectively

This section of the guide provides information on how to utilize ChatGPT's advanced features effectively, including how to phrase the prompts and interpret the responses.

To utilize ChatGPT's advanced features effectively, here are some tips and best practices to keep in mind:

1. Clearly define your task: Before using ChatGPT for any advanced task, it's important to have a clear understanding of what you want to accomplish. This will help you define the appropriate prompt or input for ChatGPT to generate the desired output.
2. Use relevant and high-quality data: ChatGPT's performance is heavily dependent on the quality and relevance of the data it is trained on. When using ChatGPT for advanced tasks, make sure to use high-quality and relevant data to fine-tune the model for optimal performance.
3. Provide context and constraints: When using ChatGPT for content generation or creative writing, it's important to provide context and constraints to ensure that the output is relevant and accurate. For example, you can provide a specific topic or tone for ChatGPT to follow.
4. Monitor the output: It's important to monitor the output generated by ChatGPT for any potential biases, inaccuracies,

or errors. You can do this by reviewing and editing the output as needed.

5. Continuously improve the model: ChatGPT's performance can be further improved by fine-tuning the model on additional data or by using different configurations.

Continuously experimenting and fine-tuning the model can lead to better performance and more accurate outputs.

By following these best practices, you can effectively leverage ChatGPT's advanced features to improve your workflows and generate high-quality content.

Troubleshooting ChatGPT

Users are introduced to common issues they may encounter when using ChatGPT and how to resolve these issues.

Despite its high accuracy and capabilities, ChatGPT may occasionally encounter issues or errors. Here are some common issues and their corresponding solutions:

1. **ChatGPT is unresponsive:** If ChatGPT is unresponsive or not generating any output, try refreshing the page or restarting your device. If the issue persists, try clearing your browser cache and cookies.

2. ChatGPT is generating inaccurate or irrelevant output:

If ChatGPT is generating inaccurate or irrelevant output, try adjusting your prompts or inputs to provide more context or specificity. You can also try using different configurations or fine-tuning the model on different data.

3. ChatGPT is generating offensive or biased output: If

ChatGPT is generating offensive or biased output, it's important to review and edit the output as needed. You can also provide feedback to the OpenAI team to help improve the model's accuracy and fairness.

4. ChatGPT is generating low-quality output: If ChatGPT is

generating low-quality output, try using higher-quality data to fine-tune the model. You can also experiment with different configurations or use other models that are better suited for your specific task.

If you encounter any other issues or errors while using ChatGPT, you can refer to the OpenAI documentation or reach out to the OpenAI support team for assistance.

Common issues users may encounter when using ChatGPT

This section of the guide provides information on common issues users may encounter when using ChatGPT, including inaccurate responses and slow response times.

While ChatGPT is a powerful and accurate language model, users may occasionally encounter issues or challenges when using it. Here are some common issues that users may encounter and some potential solutions:

1. Generating irrelevant or inaccurate responses:

ChatGPT may sometimes generate responses that are irrelevant or inaccurate to the prompt or question. This can happen due to various reasons, including the model's lack of training data on a specific topic or context, or a poorly formed prompt. To address this issue, users can try to provide more specific or detailed prompts that are relevant to the intended question or topic. Users can also try to fine-tune the model by providing additional data or by experimenting with different model configurations.

- 2. Generating offensive or biased responses:** ChatGPT is trained on a large corpus of text data, and it may sometimes generate responses that are offensive or biased towards certain groups. To address this issue, users can flag offensive or biased responses and provide feedback to the OpenAI team to improve the model's accuracy and fairness. Users can also use caution and good judgment when using the model for sensitive topics.

3. **Difficulty initiating a conversation:** Some users may find it difficult to initiate a conversation with ChatGPT, especially if they are new to the platform or are not familiar with how to formulate questions or prompts. To address this issue, users can refer to the Getting Started section of this guide, which provides step-by-step instructions on how to initiate a conversation with ChatGPT. Users can also experiment with different types of prompts, such as questions, statements, or keywords, to see what works best for them.
4. **Slow response time:** ChatGPT's response time may vary depending on the complexity of the input and the amount of data processing required. In some cases, users may experience slow response times, especially when generating longer or more complex outputs. To address this issue, users can try to simplify their prompts or inputs, or use more concise language when formulating their questions or statements. Users can also try to use the model during off-peak hours, when there may be less demand on the system.

By being aware of these common issues and taking steps to address them, users can maximize the effectiveness and accuracy of their interactions with ChatGPT.

Solutions to these issues

This section of the guide provides solutions to common issues users may encounter when using ChatGPT, including providing clear and specific prompts and being patient.

While using ChatGPT, users may encounter some issues that may affect the effectiveness and accuracy of their interactions. Here are some solutions to the common issues users may encounter:

1. **Generating irrelevant or inaccurate responses:** To improve the accuracy of the model's responses, users can try the following solutions:
 - Provide more specific and detailed prompts that are relevant to the intended question or topic.
 - Experiment with different types of prompts, such as questions, statements, or keywords, to see what works best for the model.
 - Use a more structured format for prompts, such as providing context or examples, to help the model better understand the user's intent.
 - Fine-tune the model by providing additional data or by experimenting with different model configurations.
2. **Generating offensive or biased responses:** To address the issue of offensive or biased responses, users can take the following steps:

- Flag offensive or biased responses and provide feedback to the OpenAI team to improve the model's accuracy and fairness.
 - Use caution and good judgment when using the model for sensitive topics.
 - Consider using a different language model that has been specifically designed to address issues of fairness and bias, such as the GPT-3 Safe AI model.
3. **Difficulty initiating a conversation:** To address the issue of difficulty initiating a conversation, users can try the following solutions:
- Refer to the Getting Started section of this guide, which provides step-by-step instructions on how to initiate a conversation with ChatGPT.
 - Experiment with different types of prompts, such as questions, statements, or keywords, to see what works best for the user.
 - Use more natural language when formulating questions or statements, such as using conversational language or using more specific and detailed language.
4. **Slow response time:** To address the issue of slow response time, users can try the following solutions:
- Simplify prompts or inputs to reduce the complexity of the input and the amount of data processing required.

- Use more concise language when formulating questions or statements.
- Use the model during off-peak hours, when there may be less demand on the system.
- Consider using a more powerful computing device or a faster internet connection to improve response time.

By implementing these solutions, users can improve the accuracy, effectiveness, and efficiency of their interactions with ChatGPT.

How to contact support if further assistance is needed

Users are provided information on how to contact the OpenAI support team if they require further assistance.

If users encounter any issues while using ChatGPT, they can contact the OpenAI support team for further assistance. Here's how to get in touch with the support team:

1. **Visit the OpenAI Support Center:** Users can visit the OpenAI support center, which provides a range of resources and tools to help users troubleshoot issues with ChatGPT. The support center includes FAQs, troubleshooting guides, and a community forum where users can share their experiences and seek advice from other users.
2. **Submit a support ticket:** If users can't find a solution to their issue on the support center, they can submit a support

ticket to the OpenAI support team. To submit a support ticket, users can click on the "Contact Us" button on the support center homepage and fill out the form with details about their issue. The support team will respond to the ticket as soon as possible.

3. **Contact OpenAI on social media:** Users can also reach out to OpenAI on social media platforms such as Twitter, Facebook, or LinkedIn to get support. OpenAI has an active presence on these platforms, and users can expect a prompt response to their queries or issues.

By utilizing these resources and contacting the OpenAI support team, users can get the help they need to address any issues or concerns they may have while using ChatGPT.

Conclusion

This section of the guide provides a summary of the key points covered in This section of the guide and provides final thoughts and recommendations for using ChatGPT effectively.

In conclusion, ChatGPT is a powerful tool that can help users with a wide range of tasks, from answering questions to generating creative writing. By following the guidelines outlined in this guide, users can get the most out of their interactions with ChatGPT and improve the accuracy and relevance of its responses.

Whether users are looking for a quick answer to a question or need help with a more complex task, ChatGPT can be an invaluable resource. By utilizing its advanced features and exploring its capabilities beyond basic conversation, users can unlock its full potential and achieve their goals more efficiently and effectively.

If users encounter any issues or have questions about ChatGPT, they can refer to the troubleshooting section of this guide or contact the OpenAI support team for further assistance. With the right guidance and support, users can leverage ChatGPT's capabilities to achieve their objectives and make their lives easier and more productive.

Summary of key points covered in the guide

This section of the guide provides a summary of the key points covered in the guide, including how to initiate a conversation with ChatGPT, guidelines for effective communication, understanding ChatGPT's responses, and utilizing ChatGPT's advanced features.

This guide has provided users with a comprehensive overview of ChatGPT and how to use it effectively. Some of the key points covered in this guide include:

- ChatGPT is an artificial intelligence language model that can answer questions and generate text based on user input.
- The target audience for this guide includes anyone who wants to use ChatGPT, regardless of their technical expertise.
- Users can access ChatGPT through various channels, including the OpenAI website and third-party applications.
- To initiate a conversation with ChatGPT, users need to type in their questions or prompts in the chat window.
- To improve the accuracy of ChatGPT's responses, users should follow the guidelines for effective communication and provide clear and specific prompts.
- ChatGPT's advanced features include summarizing text, generating creative writing, and performing various other tasks.
- If users encounter any issues or have questions, they can refer to the troubleshooting section of this guide or contact the OpenAI support team for further assistance.

By following the guidelines outlined in this guide and leveraging ChatGPT's advanced features, users can make the most out of their interactions with this powerful tool and achieve their objectives more efficiently and effectively.

Final thoughts and recommendations for using ChatGPT effectively.

This section of the guide provides final thoughts and recommendations for using ChatGPT effectively, including providing clear and specific prompts, utilizing ChatGPT's

In conclusion, ChatGPT is a powerful tool that can help users with a wide range of tasks. By following the guidelines outlined in this guide, users can leverage its capabilities to achieve their objectives more efficiently and effectively.

To use ChatGPT effectively, users should keep the following recommendations in mind:

- **Provide clear and specific prompts:** ChatGPT's accuracy depends on the clarity of the user's prompts. Users should provide clear and specific prompts to get the most accurate and relevant responses.
- **Use ChatGPT's advanced features:** ChatGPT's advanced features can help users perform a wide range of tasks, from summarizing text to generating creative writing. Users should explore these features to get the most out of their interactions with ChatGPT.

- **Understand ChatGPT's limitations:** While ChatGPT is a powerful tool, it has limitations. Users should not rely on it for critical tasks or decisions that require human judgment.
- **Be patient:** ChatGPT may take some time to respond to user prompts, especially if they are complex or require significant processing power.
- **Keep the conversation flowing:** Users should try to keep the conversation flowing and avoid repetitive prompts to get the most out of their interactions with ChatGPT.

By following these recommendations and utilizing ChatGPT's capabilities to their fullest extent, users can achieve their objectives more efficiently and effectively.